

# PORT FOLIO/

More than built square meters, we offer spaces for living, well-being, and quality.



## Our company

# 01

We are a Colombian architecture and interior design firm with over 10 years of experience in the production, remodeling, and maintenance of corporate, retail, and residential spaces.

We have a team of over 300 professionals in the design and construction field, with an innovative mindset and extensive national and international experience.

In line with the sustainability of the planet, we create environmentally friendly environments and provide our clients with effective solutions in the field of physical infrastructure, optimizing areas of habitability and coexistence.



**Arch. Jaime Córdoba Belalcázar**  
Project manager

As an architect, he has worked in the construction sector for nationally and internationally renowned companies, allowing him to have experience in constructing over 85,000 square meters. In addition to several years of university teaching, he is a keen expert in standards, construction processes, and codes for space rehabilitation.

**Arch. Sebastián Gómez Infante**  
Design director

Architect from Pontifical Javeriana University in Bogotá. Master's in Interior Space Design, postgraduate in Private Perimeters, Workspaces, and Ephemeral Architecture from Pompeu Fabra University in Barcelona. Passionate about interior design and spatial sensitivity.



Roster



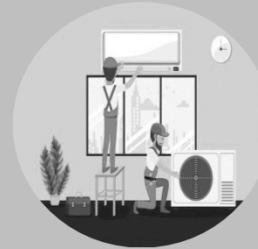
### Design

We design architecture tailored to our clients and their needs with effective solutions in the field of physical infrastructure to make improvements to their physical space.



### Construction

We have qualified personnel in the construction sector with experience in building over 80,000 square meters both nationally and internationally.



### Technical Maintenance

We offer corrective and preventive maintenance services for architectural spaces (commercial, residential, and corporate).



### Management and Oversight

With accurate planning, time management, and budgeting, we carry out successful projects, taking into account feasibility analysis, scheduling, execution, and evaluation.

# Interior design

Corporate  
Spaces

02



# Cochlear Colombia



**Cochlear Colombia**  
Bogotá, Colombia  
Area: 150 m<sup>2</sup>

A leading Australian hearing implant company arrives in Colombia. Their offices feature a spacious teamwork area, a boardroom, private offices, a technical room, and a reception area. The space is dominated by an open and well-lit design, with corporate colors that are unique to the brand.

# Cochlear Colombia



## **Medical office Cochlear**

Bogotá, Colombia

Area: 26 m<sup>2</sup>

Center for the care and assessment of patients with hearing impairments.

# Functional medicine Md. Carlos Jaramillo



**Functional medicine**  
**Dr. Jaramillo**  
Bogotá, Colombia  
Area: 92 m<sup>2</sup>

With an ambitious health program and diverse requirements to fulfill, a solution was achieved in an area of nearly 92 m<sup>2</sup> for three medical offices, a reception area, and complementary services. This resulted in a warm environment, distinct from current hospital environments governed solely by regulations.



# Complementos Humanos



## Complementos Humanos

Medellín, Colombia

Area: 900 m<sup>2</sup>

A leading company in selection processes, hiring, payroll, and testing. Indisoluble worked on space optimization, including individual and group interview areas, work zones, testing rooms, and administrative areas.

# Opperar Nutresa



**Opperar Nutresa**  
Medellin, Colombia  
Area: 320 m<sup>2</sup>

With the aim of expanding its service portfolio, the Nutresa Group creates this new business unit dedicated to land freight transportation and last-mile distribution for over seventy brands.

# Aporte Confiable



**Aporte Confiable**  
Medellin, Colombia  
Area: 140 m<sup>2</sup>

This aggregating company, in accordance with the new laws of the government and ministries of labor and social protection, manages worker affiliations to their labor obligations.

# Caris



## Caris

Medellin, Colombia

Area: 370 m<sup>2</sup>

Specialized unit in the field of occupational medical health, providing services to the business and commercial sector. It offers clinical laboratory services, vaccination, audiometry, spirometry, psychological, and administrative areas. All its facilities comply with the standards required by the Health Department.

# Dunnhumby Colombia



## **Dunnhumby Colombia**

Envigado, Colombia

Area: 356 m<sup>2</sup>

The work consisted of a relocation project for this marketing office in the VIVA shopping center (Envigado), a global leader in customer science, maximizing services and operational efficiency.

# Fundación cardio Vascular



**Multiple auditorium**  
**Fundación Cardiovascular de Colombia**  
Bucaramanga, Colombia  
Area: 475 m<sup>2</sup>

In nearly 475 m<sup>2</sup>, an auditorium was fitted out with sound and video booths, which is divided into three multipurpose rooms independently with movable acoustic partitions.

# Interior Design

Retail  
Spaces

03



# Café San Alberto - Chapinero



## Café San Alberto - Chapinero

Bogotá, Colombia  
Area: 895 m<sup>2</sup>

In Colombia's historical record of architecture, the neoclassical style, which dates back to the period between 1850 and 1930, is known as Republican Architecture. This style distinguishes itself by using formal elements from other ancient styles, such as classical, gothic, or oriental influences. In this way, in a space of close to 900 m<sup>2</sup>, Indisoluble managed to transmit through the republican architecture of this chapineruna house in Bogota the essence of Café San Alberto, the most awarded in Colombia.



# BumBox – Caracol TV



## BumBox – Caracol Tv

Bogotá, Colombia

Area: 65 m2

Bumbox is a new space dedicated to producing podcasts for Caracol TV, BluRadio, El Espectador, and other associated brands that offer a new way of consuming information. BumBox also focuses on video podcasts, an innovative format that combines video and audio to provide a more precise visualization of the discussion topic.

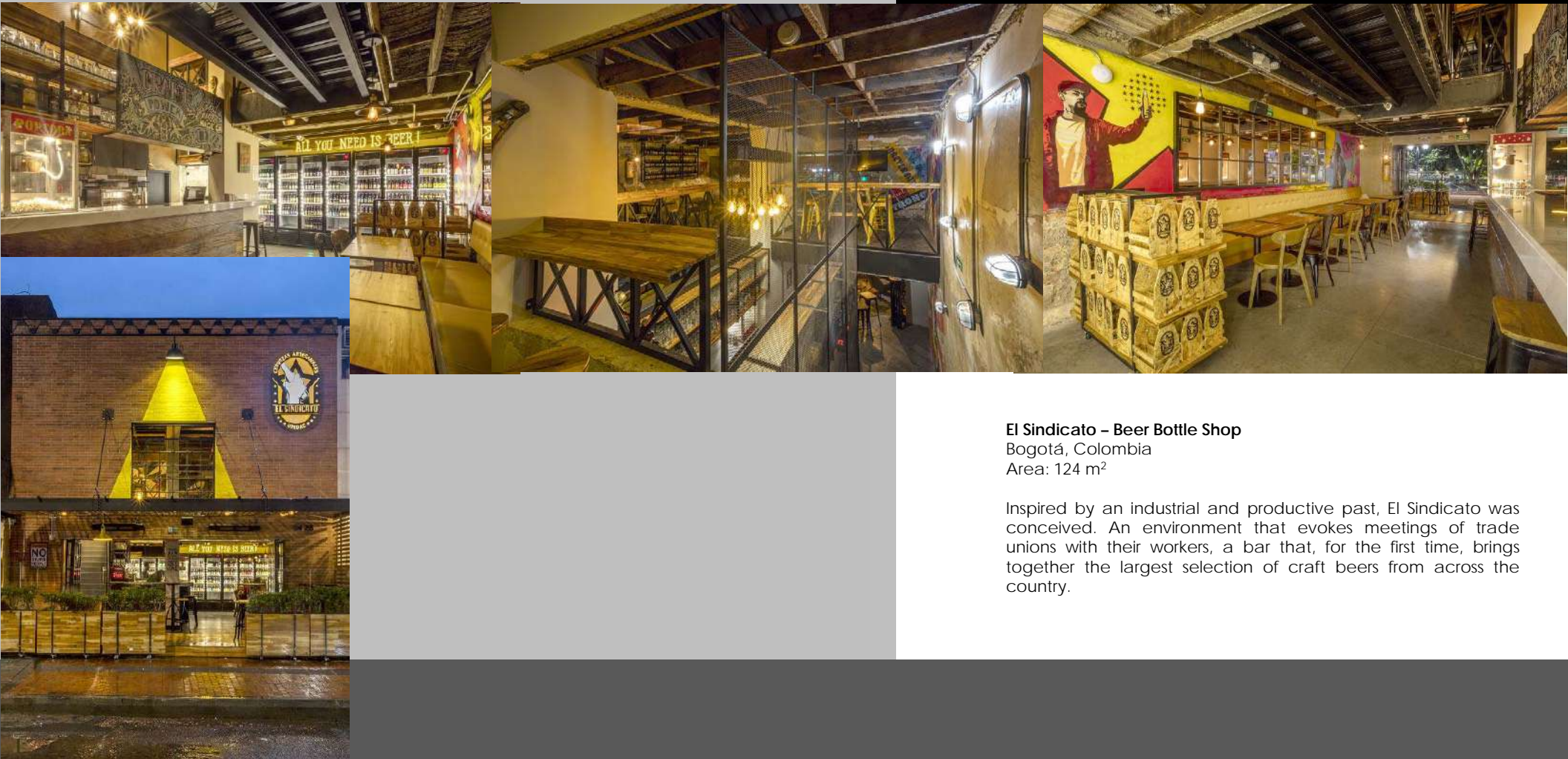
# Café San Alberto



**Café San Alberto**  
Bogotá, Colombia  
Area: 156 m<sup>2</sup>

For Colombia's most award-winning coffee, this space is adapted in the center of Bogotá, with finishes that evoke a true 'temple of coffee,' conveying the arduous traditional process in the coffee fields to offer a luxury coffee in every cup.

# El Sindicato Beer Bottle Shop



## El Sindicato – Beer Bottle Shop

Bogotá, Colombia

Area: 124 m<sup>2</sup>

Inspired by an industrial and productive past, El Sindicato was conceived. An environment that evokes meetings of trade unions with their workers, a bar that, for the first time, brings together the largest selection of craft beers from across the country.

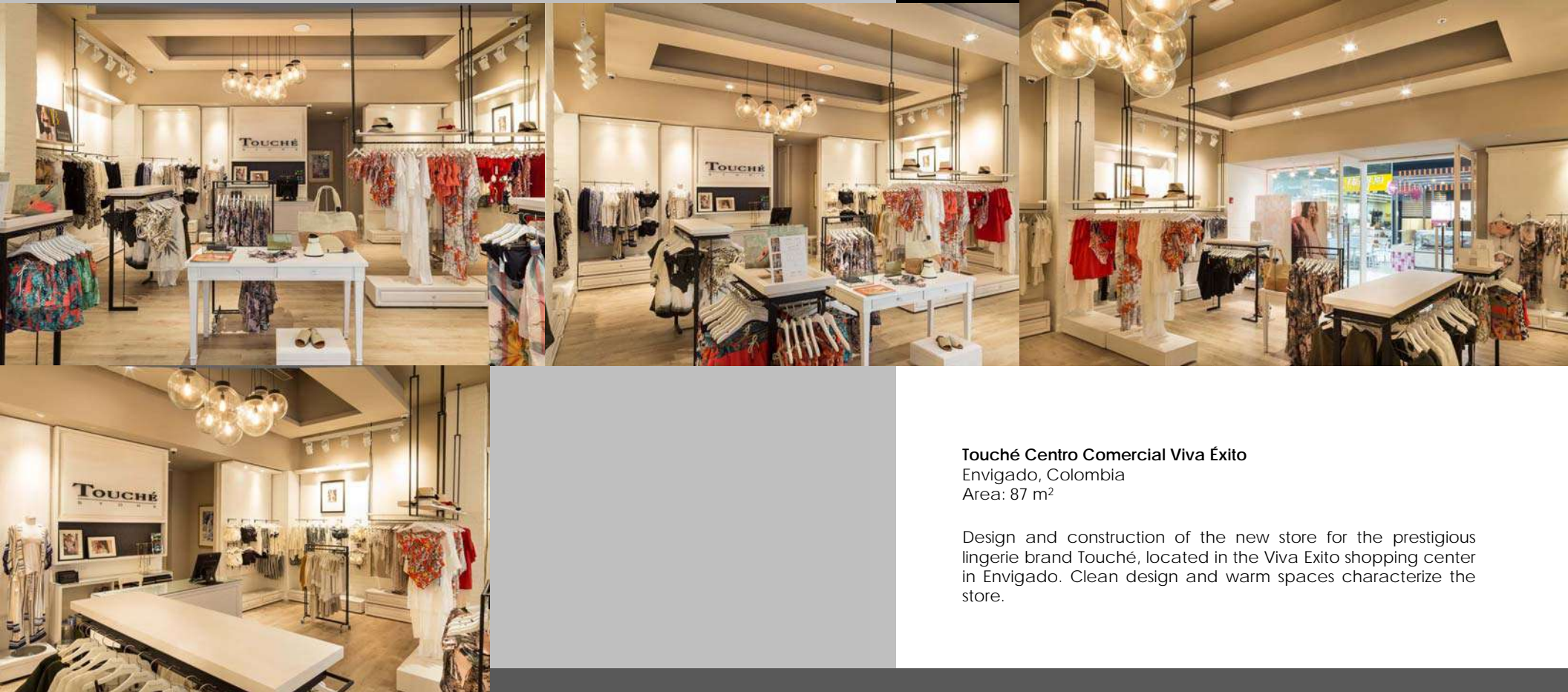
# DHL – Javeriana



**DHL Javeriana**  
Bogotá, Colombia  
Area: 63 m<sup>2</sup>

For the world-leading logistics company DHL, with national and international shipments, a rebranding and update were implemented in accordance with headquarters' guidelines, aiming for efficiency and agility in customer service.

# Touché – Envigado



**Touché Centro Comercial Viva Éxito**  
Envigado, Colombia  
Area: 87 m<sup>2</sup>

Design and construction of the new store for the prestigious lingerie brand Touché, located in the Viva Éxito shopping center in Envigado. Clean design and warm spaces characterize the store.

# Touché – Multiplaza



**Touché Multiplaza Mall**  
Bogotá, Colombia  
Area: 80 m<sup>2</sup>

Design and construction of the new store for the prestigious lingerie brand Touché, located in the Multiplaza shopping center in Bogotá. Clean design and warm spaces characterize the store.

# Nino e Pastino



## **Nino e Pastino Mayorca Mall**

Medellin, Colombia

Area: 252 m<sup>2</sup>

This Italian artisanal food venue, located in the Mayorca shopping center, reaffirms Indisoluble's expertise in the design and construction of commercial projects and restaurants, given their high operational complexity.

# Deli – Pastry Shop



**Deli 90 STREET**  
Bogotá, Colombia  
Area: 57 m<sup>2</sup>

The pastry shop Deli, with over thirty years of tradition, sought to renew its image. In this way, the successful adaptation of its new service point on 90th Street was carried out.



# Interior design



Residential  
Spaces

04

# Parque Rosales



**Parque Rosales**  
Bogotá, Colombia  
Area: 185 m<sup>2</sup>  
Design and construction management

Nestled in Bogotá's Eastern hills, this apartment was designed and built to fulfill the needs of a young family. It has three bedrooms, a walk-in closet, an open kitchen, and social and gathering spaces.

# Rosero's Residence



## **Rosero's Residence**

Bogotá, Colombia

Area: 434 m<sup>2</sup>

This house located in the northern part of the city, built over 40 years ago, undergoes updates in finishes and functionalities. Improvements in the utilization of natural light indoors make it warmer and more comfortable.

# Parque 96



## **Parque 96**

Bogotá, Colombia

Area: 176 m<sup>2</sup>

This apartment, located in the northern part of the city, was designed to give a new look to its social area (living room and dining room), where Indisoluble designed various storage furniture for audio, video equipment, books, and other items related to the owner's activities.

# Montemadero



**Montemadero**  
Bogotá, Colombia  
Area: 140 m<sup>2</sup>

An apartment in Usaquén, originally with two bedrooms, underwent a radical transformation and now features three bedrooms (the master with a walk-in closet), a shared bathroom, a guest bathroom, kitchen, living room, and a maid's room with a bathroom. Not only was there an extreme change in layout but also in finishes.

# Multicentro



**Multicentro**  
Bogotá, Colombia  
Area: 165 m<sup>2</sup>

This project underwent a complete update not only of its architectural spaces and finishes but also of its infrastructure dating back to the mid-seventies. The result is in line with today's new trends and comforts, including versatile spaces adaptable to remote work, a requirement that is becoming prevalent in contemporary lifestyles.

# Retiro de Santa Mónica



## Retiro de Santa Mónica

Bogotá, Colombia

Area: 140 m<sup>2</sup>

To achieve a satisfactory result in this project, Indisoluble presented modifications to its original architectural design and updated finishes, all with the aim of achieving a contemporary image in line with its new owners.

# OUR CUSTOMERS

# 05



suramericana



SMITHERS-OASIS COMPANY



L'OCCITANE  
EN PROVENCE



San Alberto



TOUCHÉ  
COLLECTION

San Jorge  
FARMACIA - DROGUERIA



estivo  
beyond bodies



MYRIAM CAMHI  
COCINA Y PASTELERIA GOURMET

EKOO  
MEDIA

ARCHITECTURAL COMMUNICATION



Contact us

06



**Indisoluble**  
arquitectura + diseño interior

[www.indisoluble.co](http://www.indisoluble.co)

Bogotá D.C

Cel. 3157381894

Cel. 3115987210

